





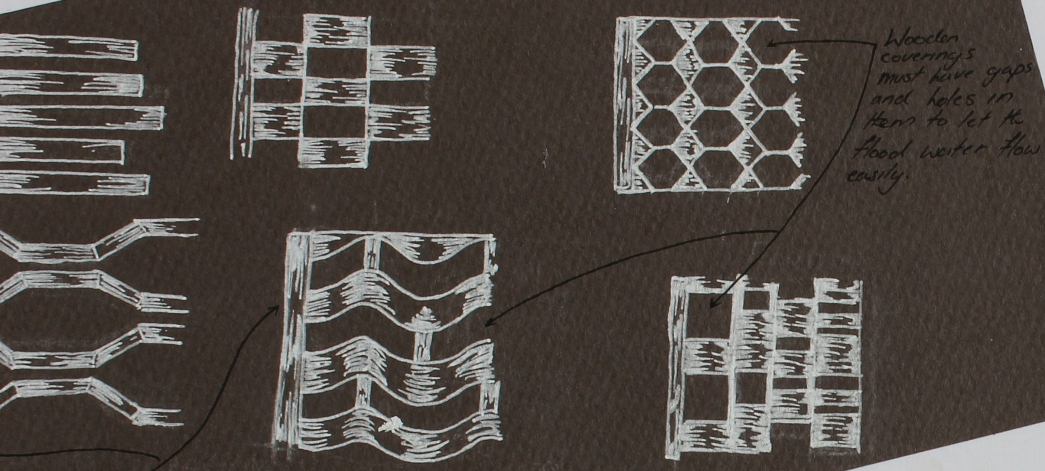






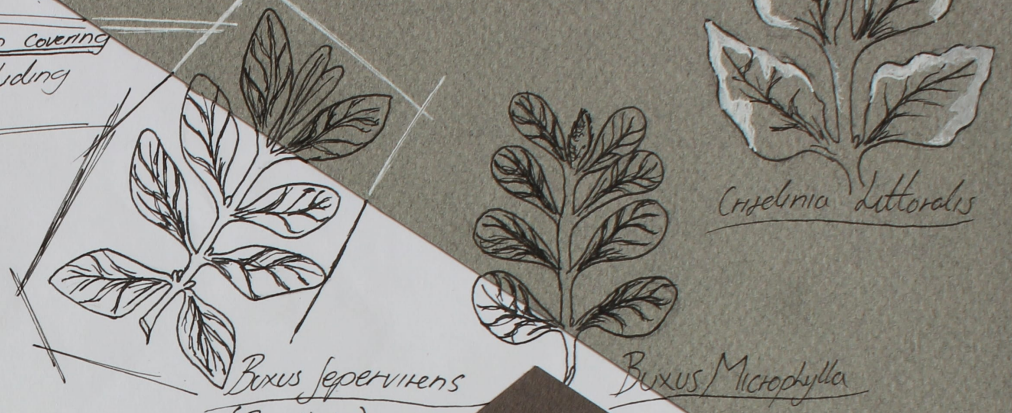
explored different styles of wood lattice coverings
 & piles - 1 and the client can either choose the
 ways or the HEDGE covering →

EXPLORATIVE: WOOD COVERING



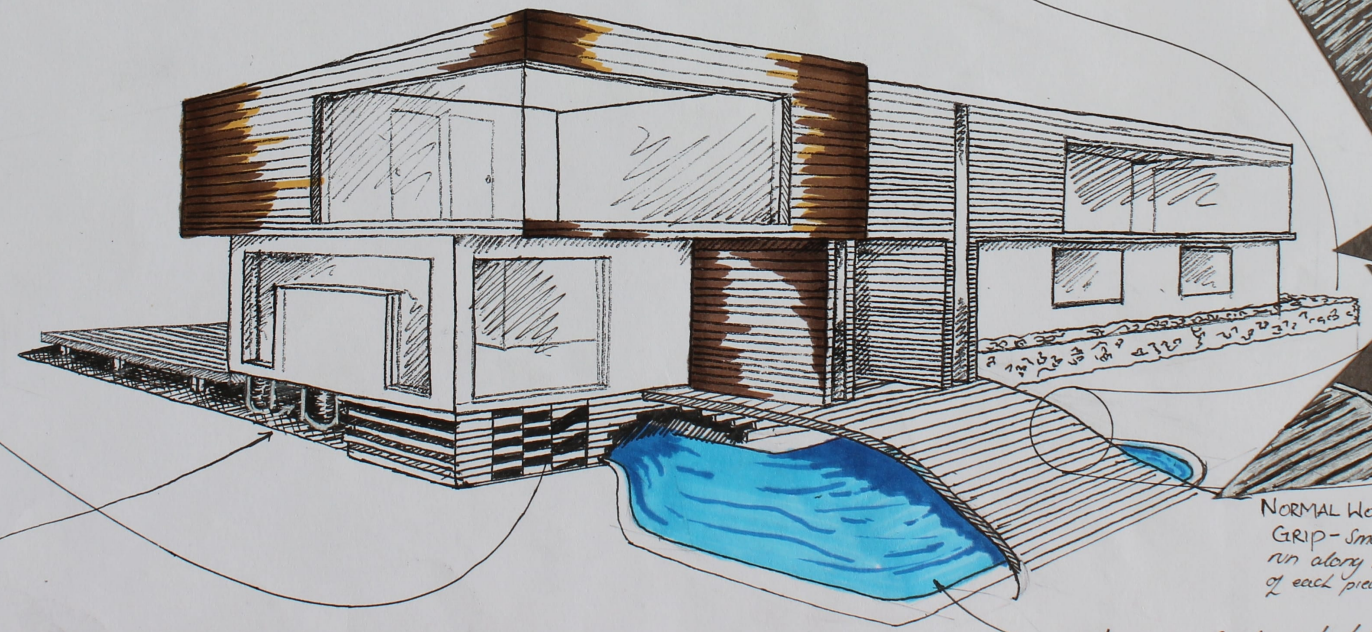
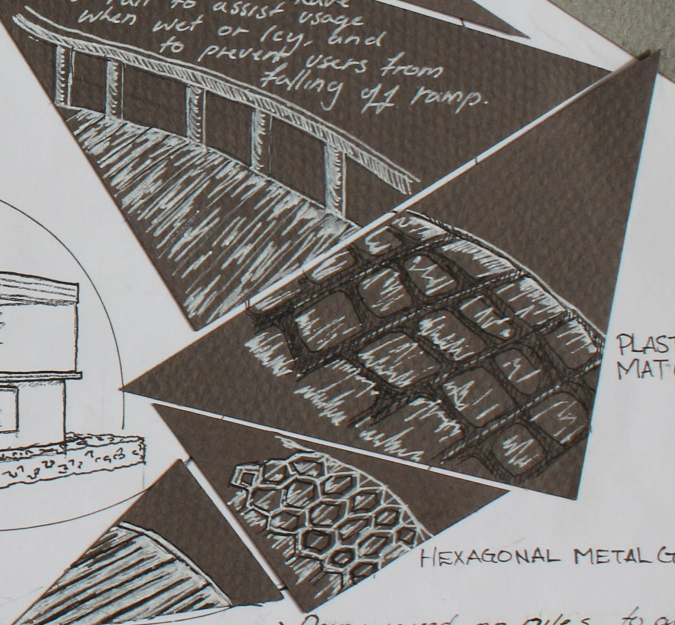
EXPLORATIVE: HEDGE COVERING

Chosen covering
 for hiding
 piles



EXPLORATIVE: RAMP USAGE & SAFETY

RAMP WILL: have to have
 a rail to assist usage
 when wet or icy, and
 to prevent users from
 falling off ramp.



NORMAL WOOD
 GRIP - small grooves
 run along the length
 of each piece of wood.

- > Design raised on piles to allow water flow underneath. - fits specification
- > Vegetation/wood needed to screen visible piles - Box Hedge suggested.
- > House accessible via wheelchair friendly ramps - (this is a must have)

Not in specifications but feature
 is a point of interest



